

# STD-22 BASIC EM BASIC STD Stack dryers



## ELECTRONIC CONTROL

Easy-to-use electronic control with push buttons to control temperature and time



## FEATURES

Reversing drum action as standard  
Galvanized drum  
Frequency inverter as standard



## VERSATILITY

Make to order - customisation  
OPL > Multivending - Standard OPL model easily transformable to coin laundry uses



## ERGONOMICS

Drawer as fluff filter, stainless steel mesh  
Big door diameters



## MAINTENANCE

Hinged control panel: easy and ergonomic access  
Technical menu: statistics for technicians and maintenance with external console (option)



## OTHERS

White painted panels  
**COOL DOWN** - anti-wrinkle at the end of the cycle  
Electric or gas heating (except PLUS model and STD-22 model: only gas)  
CE approved



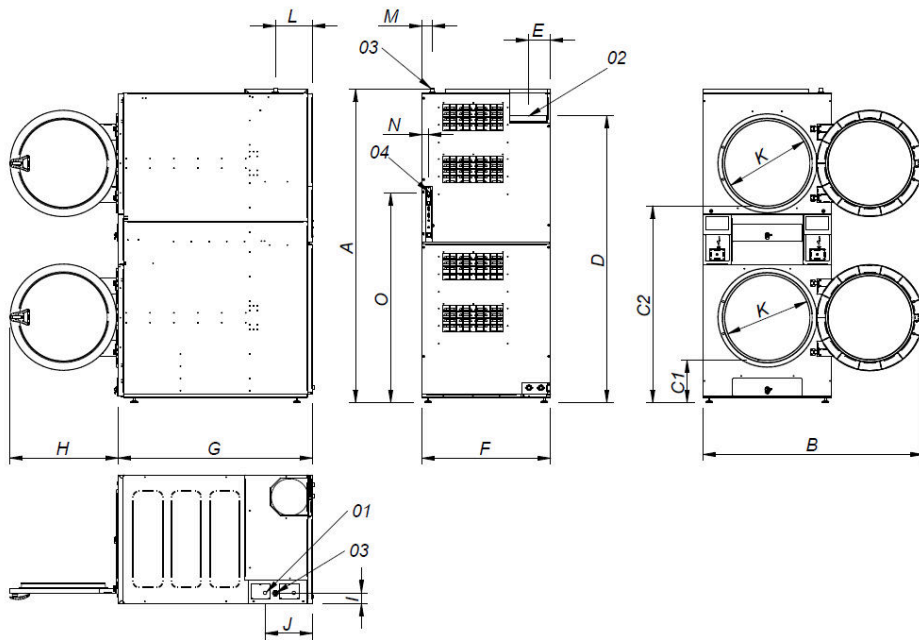
## OPTIONS

- BMS New display for EM programmer (2 units for STD)
- F03 Fluff filter with grid 0,3 mm (standard is 0,6 mm STD)
- NG Natural gas heated tumble dryer (LPG as standard)
- WB Wooden packing STD-22
- 400V 3N 60 Hz STD-11-35
- 440V/480V 3~ 60 Hz STD-11-22
- Several payment systems for self-service

CAPACITY AND DRUM	UNIT.	STD-22 BASIC EM
Capacity 1/18	Kg	24,3
	lb	53,6
Capacity 1/20	Kg	21,9
	lb	48,3
Ø Drum	mm	835
	inch	32,87
Drum length	mm	800
	inch	31,50
Drum volume	l	440
	cu ft	15,54
Ø Door hole	mm	575
	inch	22,64
Door center height	mm	547 / 1.618
	inch	22,60 / 63,70
Height from floor to bottom of door	mm	286 / 1.330
	inch	11,26 / 52,36
ELECTRIC HEATING		
Evaporation capacity	L/h	-
	US gallon/h	-
Hourly output	Kg/h	-
	lb/h	-
Installed heating power	kW	-
Installed electrical power	kW	-
Drum motor power	kW	0,37 x2
GAS HEATING		
Evaporation capacity	L/h	44
	US gallon/h	11,624
Hourly output	Kg/h	88
	lb/h	194
Installed gas heating power	kcal/h	26139 x2
	Btu/h	103658,5 x2
Installed gas heating power	kW	30,4 x2
Installed electrical power	kW	1,94
Instant propane gas consumption (G31)	Kg/h	2,61 x2
	lb/h	5,75 x2
Instant natural gas consumption (G20)	m <sup>3</sup> /h	3,22 x2
	cfm	1,89 x2
Ø Gas inlet	BSPP ISO 228-1	3/4"
STEAM HEATING		
Installed steam heating power	kW	-
	Btu/h	-
Installed electrical power	kW	-
Steam consumption (8 barG) - Standard	kg/h	-
Steam consumption (116 psiG)	lb/h	-
Steam pressure	barG	-
	psiG	-
Standard steam inlet - outlet	BSPT- ISO7.1	-
Steam inlet - condensate outlet	NPT ANSI B1.20.1 Tapered	-
Steam consumption (5 barG) - Low Pressure	kg/h	-
Steam consumption (72,5 psiG) - Low Pressure	lb/h	-
Steam pressure (low pressure)	barG	-
	psiG	-
Low pressure steam inlet - outlet	BSPT- ISO7.1	-
VENTILATION		
Fan motor power	kW	0,55 x2
Nominal air flow rate	m <sup>3</sup> /h	900 x2
	cfm	529,72 x2



Ø Fume exhaust	mm	250 x2	
	inch	9,84 x2	
<b>HEAT EMISSION</b>			
Maximum total heat emission	kW	2,6	
	Btu/h	8876,8	
Max. front heat emission	kW	1,9	
	Btu/h	6486,9	
<b>CONNECTIONS</b>			
Tension 230V - I + N + T	Nº x mm² / A	E	G
Tension 230V - III + T	Nº x mm² / A	-	3 x 2,5 / 20A
Tension 400V - III + N + T	Nº x mm² / A	-	3 x 2,5 / 20A (1*)
		-	3 x 2,5 / 20A (2*)
<b>NET DIMENSIONS / PACKING DIMENSIONS</b>			
Net / gross width	mm	870 / 950	
	inch	34,25 / 37,40	
Net / gross depth	mm	1.312 / 1.395	
	inch	51,65 / 54,92	
Net height / gross height	mm	2.118 / 2.250	
	inch	83,39 / 88,58	
Net / gross weight	Kg	373,5 / 388,5	
	lb	823,43 / 856,50	
<b>OTHERS</b>			
Sound level	dB	69	



- 01 ELECTRIC CONNECTION
- 02 FUMES OUTLET Ø250
- 03 GAS INLET 3/4
- 04 ETHERNET CONNECTION (only available with ET2 models)

	A	B	C1	C2	D	E	F	G	H	I	J	K	L	M	N	O
STD-22	2118*	1490	286	1330	1940	149	870	1312	735	73	320	575	250	70	45	1416

\* Measurement with legs mounted (30mm)

