



MED-22 ET2

Medical barrier washers



EASY TOUCH 2

7" touch screen easy to use and fully programmable ET2, display on dirty side
Connection USB. free software online for programming, telemetry, data analysis...
Videos on display (instructions...)
37 languages
8 dosing signals as standard



FEATURES

Automatic positioning of drum, drum lock with optional electric brake
2 water inlets
WET CLEANING, telemetry as standard
Dual heating (electric - steam) model available
G FACTOR 350



EFFICIENCY

Optimized consumption, automatic or manual adjustment of water levels and detergents according to the load
Ready for water recovery tanks: AQUABAC
High G factor: reduced residual moisture, reduced drying time
Water Saving system: 3 configurable levels of savings



CONNECTIVITY

Danube Online communication - IoT as standard
Remote technical service
Laundry management



ERGONOMICS

Huge loading and unloading doors opening
Easy drum opening by push button
Loading height (670 mm from door base)



MAINTENANCE

Electric elements on left side, mechanical ones on right side, connections on the top (protected from detergents and water splashes)
Central drain as standard
Technical menu: statistics, alarms, autotest, data recovery for technicians and maintenance



OTHERS

2 opposed doors
Grey skinplate outer casing
Stainless steel AISI 304 top panel, vat and drum
Electronic control of imbalance with frequency inverter
Electric, steam or dual heating
CE approved



OPTIONS

- 2SC 2nd 7" Screen MED 16-22
- WS weighing system MED 16-22 (additional 6 dosing signals included)
- XD 6 extra dosing signals card
- TWI 3rd water inlet MED 16-22
- DD 2nd draining valve MED 16-22
- XL Ready for AQUABAC XL conn. 3/4" for barriers MED-22
- TV Titration valve MED 16-22
- LDV Side drain valve MED 16-22
- LPS Low steam pressure MED 16-22
- DBX Detergent box kit MED 22
- BR Motor brake MED 16-22
- UPS Option (in case of powerfailure) MED 16-22
- End of cycle light alarm
- 1OD 1-door opening (single side operation) MED 22
- Base for 850 mm loading height MED22
- SSC Stainless steel outer casing MED-22 (AISI-304)
- Stainless steel frame MED-22
- Stainless steel frame MED-22 with loading base
- WM Maritime Wood packaging for MED-22
- 440/60/3 (marine) MED-16-22
- IoT licence - Danube Online

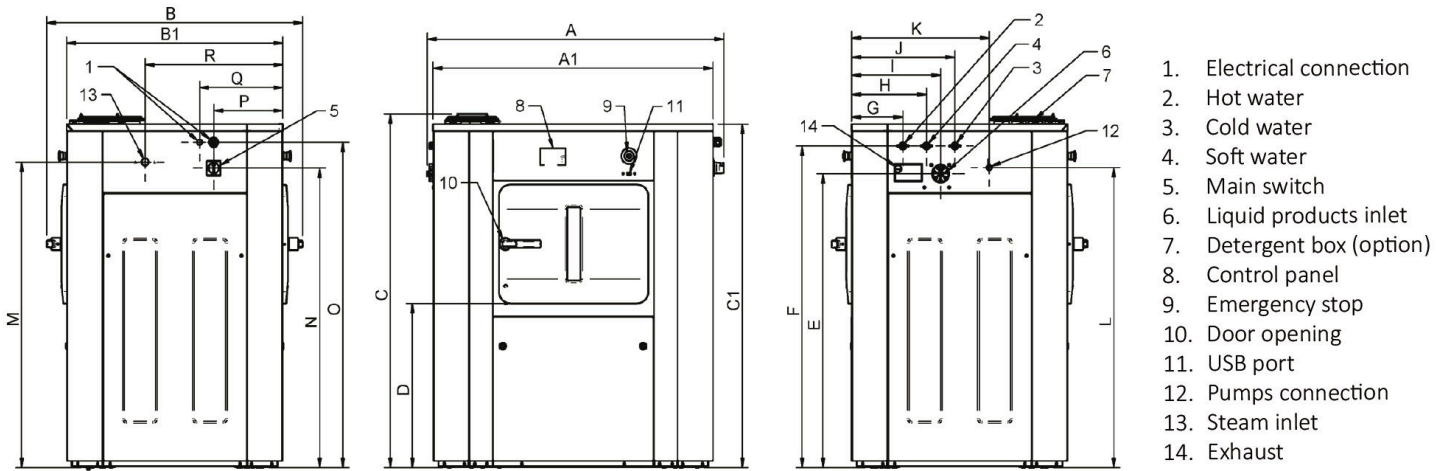
DRUM	UNIT.	MED-22 ET2	
Load capacity 1:9	Kg	24,5	
	lb	54	
Load capacity 1:10	Kg	22	
	lb	48,5	
Volume	l	220	
	ft ³	7,77	
Diameter	mm	633	
	inch	24,9	
Depth	mm	700	
	inch	27,6	
Drum compartments	-	1	
Pullman drum score	-	N/A	
GENERAL DETAILS			
Washing speed	rpm	45	
Spining speed	rpm	1.000	
G Factor	-	350	
Microprocessor ET2	-	7"	
Double screen	-	OPT.	
Motor break	-	OPT.	
Double drainage	-	OPT.	
DOOR			
Drum opening dimensions	mm	400 x 315	
	inch	15,7 x 12,4	
Vat opening dimensions	mm	455 x 415	
	inch	17,9 x 16,3	
Height door bottom	mm	670	
	inch	26,4	
POWER			
Motor	kW	2,20	
Electric heating	kW	18	
Total electric power (elec mod)	kW	20,20	
Total electric power (hot water mod)	kW	2,20	
Total electric power (steam mod)	kW	2,20	
CONNECTIONS		E/DUAL	S
Tension 230V I + N + T 50/60Hz	Nº x mm ² /A	N/A	3 x 1,5 / 6A
Tension 230V III + T 50/60Hz	Nº x mm ² /A	4 x 10 / 50A	N/A
Tension 400V III + N + T 50/60Hz	Nº x mm ² /A	5 x 6 / 32A	N/A
Steam inlet (steam mod)	mm	20 / 27	
	inch	3/4"	
Steam pressure	bar	4 - 8	
	psi	58 - 116	
Water inlet	mm	20 / 27	
	inch	3/4"	
Water pressure	bar	3 - 5	
	psi	43 - 72	
Max. Water consumption*	Lit/h	198	
Drain	mm	80	
	inch	3"	
Drain capacity	l/min	200	
	cfm	5,65	
COMPRESSED AIR			
Air inlet	mm	N/A	
	inch	N/A	
Air pressure	bar	N/A	
	psi	N/A	



Air consumption	l/min	N/A
	cfm	N/A
OVERALL DIMENSIONS / PACKING DIMENSIONS		
Net width / Gross width	mm	1.256 / 1.262
	inch	46,6 / 49,7
Net depth / Gross depth	mm	1.082 / 1.102
	inch	42,6 / 43,4
Net height / Gross height	mm	1.382 (1.426**) / 1.530
	inch	54,4 (56,14**) / 60,2
Net weight / Gross weight	kg	471 / 494
	lb	1.038 / 1.089,1
Volume	m3	1,88 / 2,13
	ft3	66,39 / 75,1

* Program No 2, 100 % load

** (with detergent box option)



	A	B	C	A1	B1	C1	D	E	F	G	H	I	J	K	L	M	N	O	P	Q	R
MED-16	1 056	1 082	1 426	984	914	1 385	661	1 184	1 296	217	317	377	437	582	1 209	1 231	1 207	1 311	292	352	582
MED-22	1 256	1 082	1 426	1 184	914	1 385	661	1 184	1 296	217	317	377	437	582	1 209	1 231	1 207	1 311	292	352	582

