

# DPR-10 BASIC EM III

## BASIC EM professional dryers



### VERSATILITY

OPL <> SELF-SERVICE

Suitable for a wide range of sectors: hotels, sports halls, campsites, launderettes, etc.

Electrical models available in two versions: single-phase or three-phase (non-convertible)

Gas heating model



### FEATURES

**EM PROGRAMMER:** simple, easy electronic control: time and temperature selection (standard or self-service version)

Short drying time (less than 45 minutes)

4.5 kw heating power

Galvanised drum



### EFFICIENCY

Optimised air flow

Large lint filter drawer



### ROBUSTNESS

Outer casing in white lacquered steel panels

Robust solid door

Lint filter as drawer

Robust dryer construction



### OTHERS

Integrated COOL DOWN: anti-cooling at the end of the cycle

Electric or gas heating

CE certified



### OPTIONS

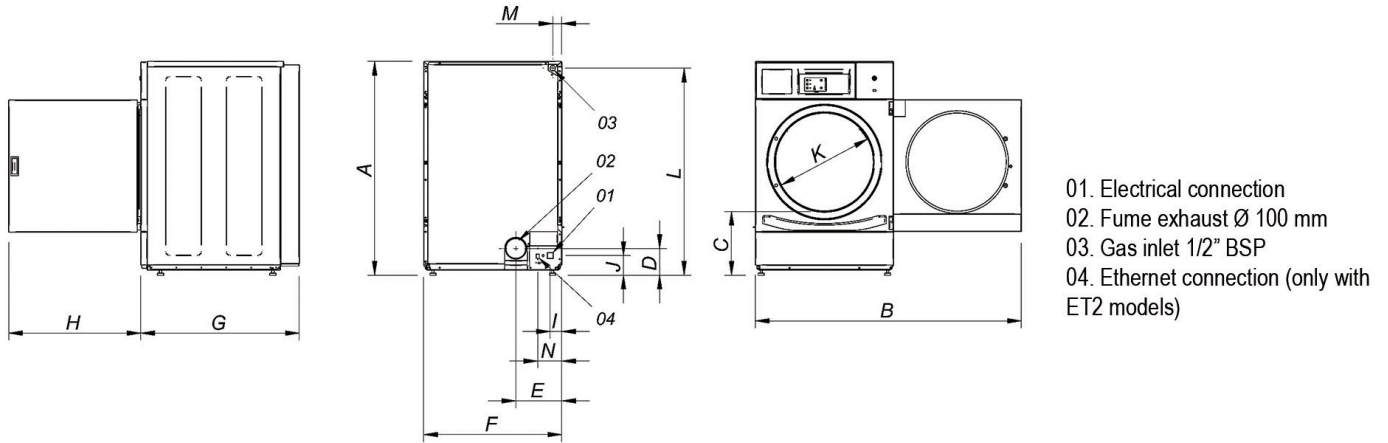
- Several payment systems for self-service

CAPACITY & DRUM		UNIT.	DPR-10 BASIC EM III	
Capacity 1/18		Kg	11,1	
		lb	24,5	
Capacity 1/20		Kg	10	
		lb	22	
Ø Drum		mm	590	
		inch	23,2	
Drum length		mm	690	
		inch	27,2	
Drum volume		l	200	
		cu ft	7,06	
Ø Door hole		mm	480	
		inch	18,90	
Door center height		mm	554	
		inch	21,8	
Height from floor to bottom of door		mm	250	
		inch	9,84	
ELECTRIC HEATING				
Evaporation capacity		L/h	6,35	
		US gallon/h	1,68	
Hourly output		Kg/h	12,5	
		lb/h	27,56	
Installed heating power		kW	4,5	
Installed electrical power		kW	4,92	
Drum motor power*		kW	0,37	
GAS HEATING				
Evaporation capacity		L/h	-	
		US gallon/h	-	
Hourly output		Kg/h	-	
		lb/h	-	
Installed gas heating power		kcal/h	-	
		Btu/h	-	
Installed gas heating power		kW	-	
Installed electrical power		kW	-	
Instant propane gas consumption (G31)		Kg/h	-	
		lb/h	-	
Instant natural gas consumption (G20)		m <sup>3</sup> /h	-	
		cfm	-	
Ø Gas inlet		BSPP ISO 228-1	-	
VENTILATION				
Fan motor power*		kW	0,37	
Nominal air flow rate		m <sup>3</sup> /h	300	
		cfm	177	
Ø Fume exhaust		mm	100	
		inch	3,94	
HEAT EMISSION				
Maximum total heat emission		kW	0,5	
		Btu/h	1536	
Max. front heat emission		kW	0,3	
		Btu/h	1075	
CONNECTIONS			E	G
Tension 230V - I + N + T		Nº x mm <sup>2</sup> / A	3 x 6 / 32A	-
Tension 230V - III + T		Nº x mm <sup>2</sup> / A	4 x 2,5 / 16A	-
Tension 400V - III + N + T		Nº x mm <sup>2</sup> / A	5 x 2,5 / 10A	-
DIMENSIONS / PACKING DIMENSIONS				
Net / gross width		mm	680 / 710	
		inch	26,8 / 28	



Net / gross depth	mm	775 / 832
	inch	30,5 / 32,8
Net / gross height	mm	1.056 / 1.141
	inch	41,6 / 44,9
Net / gross weight	Kg	93 / 111
	lb	204 / 245
<b>OTHERS</b>		
Sound level	dB	62

- \*Single motor for drum and fan  
(1) connect 2 phases and earth  
(2) connect phase, neutral and earth



	A	B	C	D	E	F	G	H	I	J	K	L	M	N
DPR-10 BASIC	1 056	1 227	320	140	226	680	775	615	57	91	480	1 015	50	118

