

DD-45 BRONZE EM BRONZE dryers



ELECTRONIC CONTROL

Easy-to-use electronic control with push buttons to control temperature and time



FEATURES

Reversing drum action as standard
Stainless steel drum as standard
Frequency inverter as standard



EFFICIENCY

DOUBLE FLOW - mixed axial-radial airflow
Big fluff filter as drawer



VERSATILITY

Make to order - customisation
OPL > Multivending - Standard OPL model easily trasformable to coin laundry uses



ERGONOMICS

Drawer as fluff filter, stainless steel mesh
Big door diameters
Opening sense of door adjustable on site



MAINTENANCE

Hinged control panel: easy and ergonomic access
Technical menu: statistics, data recovery for after-sales service, software updates, etc.
Easy access to components



OTHERS

Grey skinplate outer casing, stainless steel look
NEW: transmission by gear motor on models DD-45 to 80
SOFT DRY - new drum with stamped holes
COOL DOWN - anti-wrinkle at the end of the cycle
Electric, gas or steam heating
CE approved



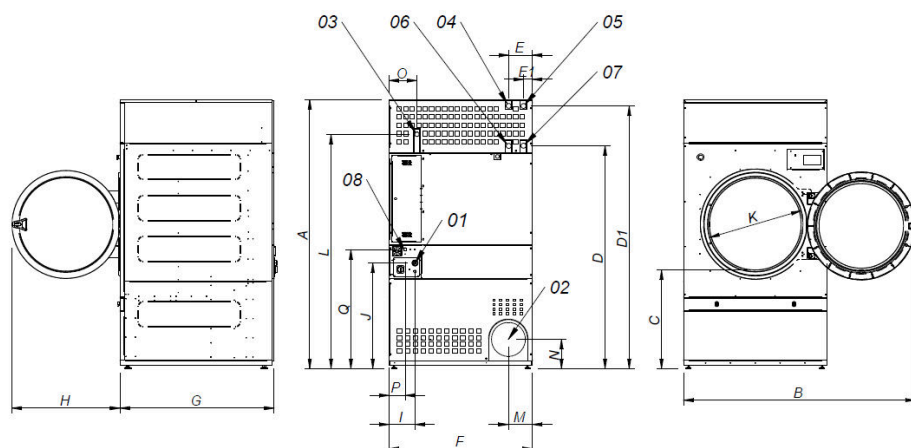
OPTIONS

- GM Manual sliding door 45 to 80 models (not available with double door glass)
- DG Double doorglass DD-35-80
- NG Natural gas heated tumble dryer (LPG as standard)
- RD Opposite door opening 45-80
- BMS New display for EM programmer
- AF Back panel with air filter from 45 to 80
- F06 Fluff filter with grid 0,6mm (standard is 0,3mm)
- F12 Fluff filter with grid 1,2 mm (standard is 0,3 mm)
- SSC Stainless steel outer casing 45
- SSF Stainless steel front panel 45, 60, 80
- LPB Low steam pressure battery 45,60,80
- WB Wooden packing 45
- 400V 3N 60 Hz DD- 45-80 E/S
- 400V 3N 60 Hz DD45-80 G
- 230V 3~ 50 Hz DD-45-80 G
- 230V 3~ 60 Hz DD-45,80 S
- 230V 3~ 60 Hz DD-45,80 G
- 440/480V 3~ 60 Hz DD-45-60-80

CAPACITY & DRUM	UNIT.	DD-45 BRONZE EM
Capacity 1/18	Kg	50
	lb	110,2
Capacity 1/20	Kg	45
	lb	99,2
Ø Drum	mm	1.225
	inch	48,23
Drum length	mm	760
	inch	29,92
Drum volume	l	900
	cu ft	31,78
Ø Door hole	mm	802
	inch	31,57
Door center height	mm	1.275
	inch	50,20
Height from floor to bottom of door	mm	813
	inch	31,99
ELECTRIC HEATING		
Evaporation capacity	L/h	40,2
	US gallon/h	10,6
Hourly output	Kg/h	80,4
	lb/h	177,2
Installed heating power	kW	54
Installed electrical power	kW	55,9
Drum motor power	kW	0,75
GAS HEATING		
Evaporation capacity	L/h	42,5
	US gallon/h	11,227
Hourly output	Kg/h	84,4
	lb/h	186,1
Installed gas heating power	kcal/h	51591
	Btu/h	204728,5
Installed gas heating power	kW	60
Installed electrical power	kW	1,9
Instant propane gas consumption (G31)	Kg/h	5,14
	lb/h	11,33
Instant natural gas consumption (G20)	m ³ /h	6,35
	cfm	3,74
Ø Gas inlet	BSPP ISO 228-1	3/4"
STEAM HEATING		
Installed steam heating power	kW	91
	Btu/h	310505
Installed electrical power	kW	1,9
Steam consumption (8 barG) - Standard	kg/h	121
Steam consumption (116 psiG)	lb/h	145,8
Steam pressure	barG	7 - 12
	psiG	101,5 - 174
Standard steam inlet - outlet	BSPT- ISO7.1	1"
Steam inlet - condensate outlet	NPT ANSI B1.20.1 Tapered	1"
Steam consumption (5 barG) - Low Pressure	kg/h	142
Steam consumption (72,5 psiG) - Low Pressure	lb/h	171,1
Steam pressure (low pressure)	barG	4 - 7
	psiG	58 - 101,5
Low pressure steam inlet - outlet	BSPT- ISO7.1	1" 1/2
VENTILATION		
Fan motor power	kW	1,1
Nominal air flow rate	m ³ /h	3.000
	cfm	1765,73



Ø Fume exhaust	mm	300
Ø Fume exhaust	inch	11,81
HEAT EMISSION		
Maximum total heat emission	kW	4,86
	Btu/h	16592,7
Max. front heat emission	kW	2,16
	Btu/h	7374,5
CONNECTIONS		
Tension 230V - I + N + T	Nº x mm² / A	- / -
Tension 230V - III + T	Nº x mm² / A	- / 4 x 2,5 / 20A
Tension 400V - III + N + T	Nº x mm² / A	5 x 35 / 100A / 5 x 2,5 / 20A
NET DIMENSIONS / PACKING DIMENSIONS		
Net / gross width	mm	1.270 / 1.330
	inch	50 / 52,36
Net / gross depth	mm	1.106 / 1.185
	inch	43,54 / 46,65
Net height / gross height (*without heating)	mm	2.380 /*2.200
	inch	93,70 / *86,61
Net / gross weight	Kg	395 / 430
	lb	870,83 / 947,99
OTHERS		
Sound level	dB	67



- 01 ELECTRIC CONNECTION
- 02 FUMES OUTLET Ø300
- 03 GAS CONNECTION 3/4"
- 04 STEAM CONNECTION (DD-45) 1"
- 05 STEAM CONNECTION (DD-60/80) 1"
- 06 CONDENSATION OUTLET (DD-45) 1"
- 07 CONDENSATION OUTLET (DD-60/80) 1"
- 08 ETHERNET CONNECTION (only available with ET2 models)

	A	B	C	D	D1	E	E1	F	G	H	I	J	K	L	M	N	O	P	Q
DD-45	2380*	2045	874	1981	2311	211	80	1270	1106	956	248	935	802	2088	214	240	244	160	1053
DD-60	2380*	2045	874	1981	2311	211	80	1270	1366	956	248	935	802	2088	214	240	244	160	1053
DD-80	2380*	2045	874	1981	2311	211	80	1270	1598	956	248	935	802	2088	214	240	244	160	1053

* Measurement with legs mounted (30mm)

