

# STD-18 SILVER ET2 PLUS SILVER STD Stack dryers

## EASY TOUCH 2

7" touch screen user friendly and programmable ET2  
USB Connection. Online platform free of charge for programming, telemetry, data analysis  
Videos on display (ads, instructions, etc.)  
37 languages

## FEATURES

Reversing drum action as standard  
Stainless steel drum as standard  
Frequency inverter as standard

## EFFICIENCY

DOUBLE FLOW - mixed axial-radial airflow  
Big fluff filter  
**New PLUS gas heated model: more powerful to achieve more productivity**

## VERSATILITY

Make to order - customisation  
**WET CLEANING**  
OPL > Multivending - Standard OPL model easily trasformable to coin laundry uses

## CONNECTIVITY

**Danube Online communication - IoT standard**  
Remote technical service  
Managemnt of laundries: OPL and COIN

## ERGONOMICS

Drawer as fluff filter, stainless steel mesh  
Big door diameters

## MAINTENANCE

Hinged control panel: easy and ergonomic access  
Technical menu: statistics, data recovery for after-sales service, software updates, etc.  
Easy access to components

## OTHERS

Grey skinplate outer casing, stainless steel look  
**SOFT DRY** - new drum with stamped holes  
**COOL DOWN** - anti-wrinkle at the end of the cycle  
Electric or gas heating (except PLUS models and STD-22 model: only gas)  
CE approved



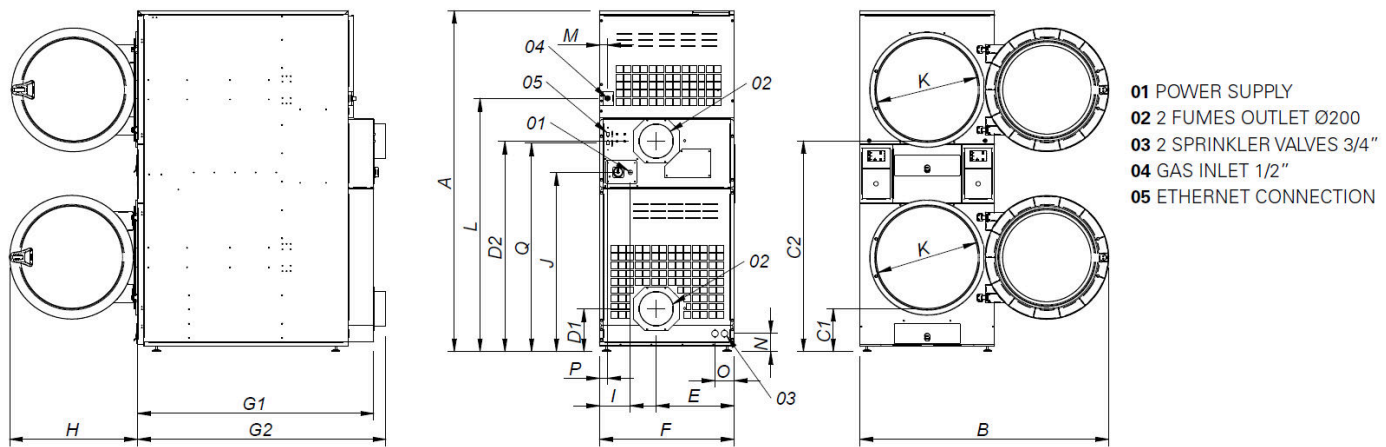
## OPTIONS

- IoT licence - Danube Online
- Several payment systems for self-service
- IMC CARE DRY Humidity sensor STD (1 unit per stack)
- DG Double door glass STD (1 unit per stack)
- FEX Sprinkler fire extinguisher STD (1 unit per stack)
- NG Natural gas heated tumble dryer (LPG as standard)
- TR Tropicalized model (ET2) (1 unit per stack)
- RD Opposite door opening STD (1 unit per stack)
- DS Perfumes dosing / spraying STD (1 unit per stack)
- AF Back panel with air filter (STD)
- 400V 3~ 50 Hz STD-11-18
- F03 Fluff filter with grid 0,3 mm (standard is 0,6 mm STD)
- 400V 3N 60 Hz STD-11-35
- 230V 3~ 60 Hz STD-11-18 G
- 230V 3~ 60 Hz STD-11-18 E
- 440V/480V 3~ 60 Hz STD-11-22
- SSC Stainless steel outer casing 18 STD
- WB Wooden packing STD-18
- SSF Stainless steel front panel STD 11-18

CAPACITY AND DRUM		UNIT.	STD-18 SILVER ET2 PLUS
Capacity 1/18		Kg	18,3
		lb	40,4
Capacity 1/20		Kg	16,5
		lb	36,3
Ø Drum		mm	750
		inch	29,53
Drum length		mm	746
		inch	29,37
Drum volume		l	330
		cu ft	11,64
Ø Door hole		mm	574
		inch	22,60
Door center height		mm	547 / 1522
		inch	21,54 / 59,92
Height from floor to bottom of door		mm	260 / 1235
		inch	10,24 / 48,62
ELECTRIC HEATING			
Evaporation capacity		L/h	-
		US gallon/h	-
Hourly output		Kg/h	-
		lb/h	-
Installed heating power		kW	-
Installed electrical power		kW	-
Drum motor power		kW	0,37 x2
GAS HEATING			
Evaporation capacity		L/h	35,3
		US gallon/h	9,325
Hourly output		Kg/h	70,7
		lb/h	155,9
Installed gas heating power		kcal/h	20650 x2
		Btu/h	81891,4 x2
Installed gas heating power		kW	24 x2
Installed electrical power		kW	1,94
Instant propane gas consumption (G31)		Kg/h	2,06 x2
		lb/h	4,54 x2
Instant natural gas consumption (G20)		m <sup>3</sup> /h	2,54 x2
		cfm	1,49 x2
Ø Gas inlet		BSPP ISO 228-1	1/2"
STEAM HEATING			
Installed steam heating power		kW	-
		Btu/h	-
Installed electrical power		kW	-
Steam consumption (8 barG) - Standard		kg/h	-
Steam consumption (116 psiG)		lb/h	-
Steam pressure		barG	-
		psiG	-
Standard steam inlet - outlet		BSPT- ISO7.1	-
Steam inlet - condensate outlet		NPT ANSI B1.20.1 Tapered	-
Steam consumption (5 barG) - Low Pressure		kg/h	-
Steam consumption (72,5 psiG) - Low Pressure		lb/h	-
Steam pressure (low pressure)		barG	-
		psiG	-
Low pressure steam inlet - outlet		BSPT- ISO7.1	-
VENTILATION			
Fan motor power		kW	0,55 x2
Nominal air flow rate		m <sup>3</sup> /h	750 x2
		cfm	441,43 x2



Ø Fume exhaust	mm	200	
	inch	7,78	
<b>HEAT EMISSION</b>			
Maximum total heat emission	kW	2,5	
	Btu/h	8353,4	
Max. front heat emission	kW	1,8	
	Btu/h	6145,5	
<b>CONNECTIONS</b>			
Tension 230V - I + N + T	Nº x mm² / A	E	G
Tension 230V - III + T	Nº x mm² / A	-	3 x 2,5 / 20A
Tension 400V - III + N + T	Nº x mm² / A	-	3 x 2,5 / 20A (1*)
		-	3 x 2,5 / 20A (2*)
<b>NET DIMENSIONS / PACKING DIMENSIONS</b>			
Net / gross width	mm	785 / 865	
	inch	30,91 / 34,06	
Net / gross depth	mm	1.443 / 1.457	
	inch	53,81 / 57,36	
Net height / gross height	mm	1.980 / 2.126	
	inch	77,95 / 83,70	
Net / gross weight	Kg	320 / 349	
	lb	705,48 / 769,41	
<b>OTHERS</b>			
Sound level	dB	64	



	A	B	C1	C2	D1	D2	E	F	G1	G2	H	I	J	K	L	M	N	O	P	Q
STD-18 PLUS	1980*	1447	259	1234	250	1223	454	785	1374	1443	735	180	1040	575	1472	45	103	100	49	1210

\* Measurement with legs mounted (30mm)

