

# DBW-70 ET2

## DBW barrier washers



### EASY TOUCH 2

7" touch screen easy to use and fully programmable ET2,  
Double display  
Connection USB. Free software online for programming,  
telemetry, data analysis...  
Videos on display (instructions...)  
37 languages  
8 dosing signals as standard



### FEATURES

Automatic positioning of drum with motor brake  
3 water inlets  
WET CLEANING, telemetry as standard  
Dual heating (electric - steam) model available  
G FACTOR 375



### EFFICIENCY

Optimized consumption, automatic or manual adjustment of  
water levels and detergents according to the load  
Ready for water recovery tanks: AQUABAC  
High G factor : reduced residual moisture, reduced drying time  
Water Saving system: 3 configurable levels of savings



### CONNECTIVITY

**Danube Online communication - IoT as standard**  
Remote technical service  
Laundry management



### ERGONOMICS

Huge loading and unloading doors opening  
Easy drum opening by push button  
Loading height (800 mm from door base)  
Pullman drum option (DBW-27 to 50): make easier the loading  
and unloading



### MAINTENANCE

Electric elements on left side, mechanical ones on right side,  
connections on the top (protected from detergents and water  
splashes)  
Central drain as standard  
Technical menu : statistics, alarms, autotest, data recovery for  
technicians and maintenance



### OTHERS

2 opposed doors  
Grey skinplate outer casing.  
Stainless steel AISI 304 top panel, vat and drum  
Electronic control of imbalance with frequency inverter  
Electric, steam or dual heating  
CE approved



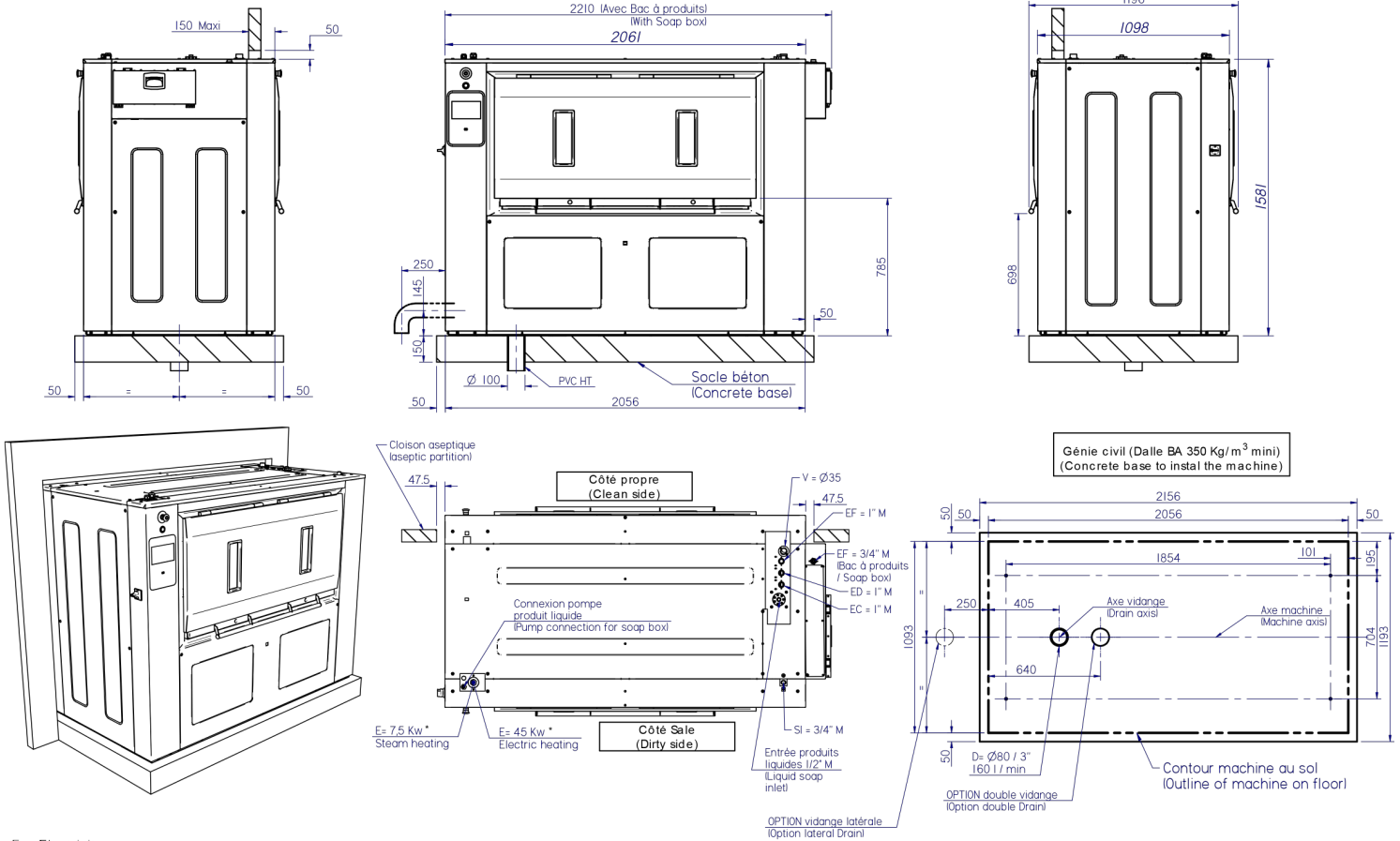
### OPTIONS

- IoT licence - Danube Online
- WS Weighing system DBW 70 (additional 6 dosing signals included)
- XD 6 extra dosing signals card
- DD 2nd draining valve DBW 27-70
- XL Ready for AQUABAC XL conn. 1" for barriers DBW-70
- TV Titration valve DBW 27-70
- LDV Side drain valve DBW 27-70
- LPS Low steam pressure (0,5 bar) DBW 27-70
- DBX Detergent box DBW 27-70
- UPS To prevent the brake from locking in case of power failure DBW 27-70
- End of cycle light alarm
- 1OD 1-door opening (single side operation) DBW-70
- Base for 850 mm loading height DBW-70
- SSC Stainless steel outer casing DBW-70 (AISI-304)
- 230/III/50-60 DBW-70
- 440/60/3 (marine) DBW
- Stainless steel frame DBW-70
- Stainless steel frame DBW-70 with loading base
- Maritime Wood packaging for DBW-70

DRUM	UNIT.	DBW-70 ET2	
Load capacity 1:9	Kg	77,7	
	lb	171,3	
Load capacity 1:10	Kg	70	
	lb	154,3	
Volume	l	694	
	ft <sup>3</sup>	24,51	
Diameter	mm	800	
	inch	31,5	
Depth	mm	1.380	
	inch	54,3	
Drum compartments	-	2	
GENERAL DETAILS			
Washing speed	rpm	45	
Spining speed	rpm	920	
G Factor	-	375	
Microprocessor ET2	-	7"	
Double screen	-	STD	
Motor break	-	STD	
Double drainage	-	OPT.	
DOOR			
Drum opening dimensions	mm	(2*) 640 x 515	
	inch	(2*) 25.2 x 20.3	
Vat opening dimensions	mm	1402 x 650	
	inch	55.2 x 25.6	
Height door bottom	mm	800	
	inch	31,5	
POWER			
Motor	kW	7,5	
Electric heating	kW	45	
Total electric power (elec mod)	kW	52,5	
Total electric power (hot water mod)	kW	7,5	
Total electric power (steam mod)	kW	7,5	
CONNECTIONS		E/DUAL	S
Tension 230V I + N + T 50/60Hz	Nº x mm <sup>2</sup> /A	N/A	N/A
Tension 230V III + T 50/60Hz	Nº x mm <sup>2</sup> /A	4 x 35 / 160A	4 x 2,5 / 16A
Tension 400V III + N + T 50/60Hz	Nº x mm <sup>2</sup> /A	5 x 16 / 80A	5 x 2,5 / 10A
Steam inlet (steam mod)	mm	20 / 27	
	inch	3/4"	
Water inlet	mm	26 / 34	
	inch	1"	
Water pressure	bar	3 - 5	
	psi	43 - 72	
Max. Water consumption*	Lit/h	720	
Drain	mm	80	
	inch	3"	
OVERALL DIMENSIONS / PACKING DIMENSIONS			
Net width / Gross width	mm	2.124 (2.276) / 2.310	
	inch	83,6 (89,6) / 90,9	
Net depth / Gross depth	mm	1.195 / 1.300	
	inch	47 / 51,2	
Net height / Gross height	mm	1.615 / 1.720	
	inch	63,6 / 67,7	
Net weight / Gross weight	kg	1.190 / 1.220	
	lb	2.624 / 2.689,6	
Volume	m <sup>3</sup>	5,17	
	ft <sup>3</sup>	182,4	



\* Program No 2, 100 % load



E = Electricity

(\*) refer to "user & installation manuel" §2.2.6 - p10 (pour détails / for details)

EC/ED/EF = Eau Chaude / Douce / Froide  
hot water / soft / cold

1" M - 3/5 Bars - 130 l/min MAX  
3/4" M - 3/5 Bars - 100 l/min MAX

SI = Entrée vapeur / Steam Inlet  
6 Bars / 240 Kg/h - Max 10 Bars

V = Event / Vent  
D = Vidange / Drain

Nota : inlet)

- Pour les arrivées d'eau, vapeur et électricité, les machines devront être installées selon les normes en vigueur. (This machine must be installed in compliance with all local regulations)
- Le chassis doit impérativement porter sur toute sa longueur et sur un sol parfaitement plan et de niveau. (The frame must be installed on a perfectly level floor)
- Il est impératif de fixer la machine au sol par les orifices prévus à cet effet. (This machine must be fixed on the floor by threaded rods)

