

# DD-35 GOLD ET2 GOLD dryers

## EASY TOUCH 2

User friendly and totally programmable 7" ET2  
USB Connection.  
Online platform free of charge for programming, telemetry, data analysis  
Videos on display (ads, instructions, etc.)  
37 languages

## FEATURES

Reversing drum action as standard  
Stainless steel drum as standard  
Frequency inverter as standard

## EFFICIENCY

**CARE DRY** - Intelligent humidity control with new drum inlet temperature control.  
**AIR RE-CYCLE** - Efficient air recirculation system  
**INSULATED PANELS** - Complete thermal insulation of panels and double door glass  
**OPTIMAL FLOW** - New optimized system of mixed airflow  
Big fluff filter

## VERSATILITY

Make to order - customisation  
**WET CLEANING**

## CONNECTIVITY

**Danube Online communication - IoT as standard**  
Remote technical service  
Management of laundries

## ERGONOMICS

Drawer as fluff filter, stainless steel mesh  
Big door diameters  
Opening sense of door adjustable on site

## MAINTENANCE

Hinged control panel: easy and ergonomic access  
Technical menu: statistics, data recovery for after-sales service, software updates, etc.  
Easy access to components

## OTHERS

Grey skinplate outer casing, stainless steel look  
**NEW** : transmission by gear motor on models DD-45 to 80  
**SPRINKLER** - Integrated Fire Extinguishing System  
**SOFT DRY** - new drum with stamped holes  
**COOL DOWN** - anti-wrinkle at the end of the cycle  
Electric, gas or steam heating  
CE approved



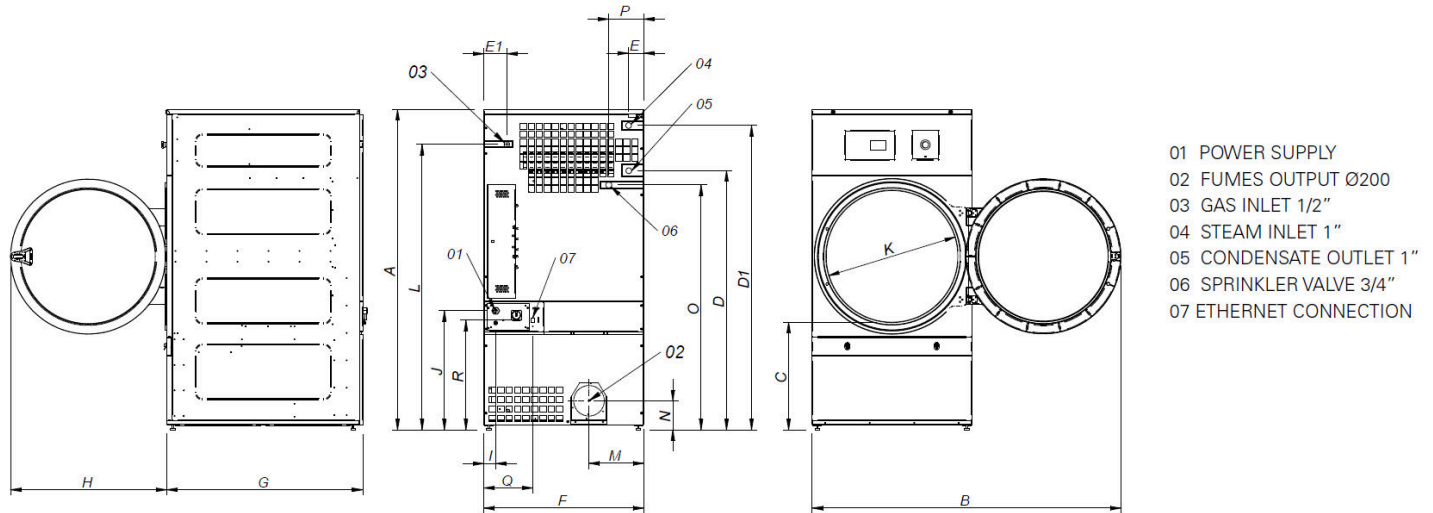
## OPTIONS

- IoT licence - Danube Online
- NG Natural gas heated tumble dryer (LPG as standard)
- RD Opposite door opening 11-35
- TR Tropicalized model (ET2)
- DS Perfume dosing / spraying
- AF Back panel with air filter from 11 to 35
- F06 Fluff filter with grid 0,6mm (standard is 0,3mm)
- F12 Fluff filter with grid 1,2mm (standard is 0,3mm)
- SSC Stainless steel outer casing 35
- SSF Stainless steel front panel 28, 35
- BSS Stainless steel steam battery 28-35
- LPB Low steam pressure battery 28,35
- 400V 3N 60 Hz DD- 11-35
- 230V 3~ 60 Hz DD-11,35 G/S
- 440/480V 3~ 60 Hz DD-22-35
- WB Wooden packing 35

CAPACITY & DRUM	UNIT.	DD-35 GOLD ET2
Capacity 1/18	Kg	36,7
	lb	80,8
Capacity 1/20	Kg	33
	lb	72,8
Ø Drum	mm	947
	inch	37,28
Drum length	mm	936
	inch	36,85
Drum volume	l	660
	cu ft	23,30
Ø Door hole	mm	802
	inch	31,57
Door center height	mm	1.040
	inch	40,94
Height from floor to bottom of door	mm	578
	inch	22,74
ELECTRIC HEATING		
Evaporation capacity	L/h	31,50
	US gallon/h	8,3
Hourly output	Kg/h	63,90
	lb/h	140,9
Installed heating power	kW	36
Installed electrical power	kW	37,35
Drum motor power	kW	0,55
GAS HEATING		
Evaporation capacity (gas model)	L/h	34,70
	US gallon/h	9,167
Hourly output (gas model)	Kg/h	73,30
	lb/h	161,6
Installed gas heating power	kcal/h	35276
	Btu/h	139986,5
Installed gas heating power	kW	41
Installed electrical power	kW	1,35
Instant propane gas consumption (G31)	Kg/h	3,51
	lb/h	7,74
Instant natural gas consumption (G20)	m <sup>3</sup> /h	4,34
	cfm	2,55
Ø Gas inlet	BSPP ISO 228-1	1/2"
STEAM HEATING		
Installed steam heating power	kW	50,10
	Btu/h	170948
Installed electrical power	kW	1,35
Steam consumption (8 barG) - Standard	kg/h	89
Steam consumption (116 psiG)	lb/h	107,2
Steam pressure	barG	6 - 9
	psiG	87 - 130,5
Standard steam inlet - outlet	BSPT- ISO7.1	1"
Standard steam inlet - condensate outlet	NPT ANSI B1.20.1 Tapered	1"
Steam consumption (5 barG) - Low Pressure	kg/h	93
Steam consumption (72,5 psiG) - Low Pressure	lb/h	112
Steam pressure (low pressure)	barG	3 - 6
	psiG	43,5 - 98
Low pressure steam inlet - outlet	BSPT- ISO7.1	1" 1/2
VENTILATION		
Fan motor power	kW	0,75
Nominal air flow rate	m <sup>3</sup> /h	1.500
	cfm	882,87



Ø Fume exhaust	mm	200	
Ø Fume exhaust	inch	7,87	
<b>HEAT EMISSION</b>			
Maximum total heat emission	kW	2,88	
	Btu/h	9832,7	
Max. front heat emission	kW	1,8	
	Btu/h	6145,5	
<b>CONNECTIONS</b>			
Tension 230V - I + N + T	Nº x mm² / A	E	G / S
Tension 230V - III + T	Nº x mm² / A	-	3 x 1,5 / 16A
Tension 400V - III + N + T	Nº x mm² / A	4 x 50 / 125A	3 x 1,5 / 16A
Tension 400V - III + N + T	Nº x mm² / A	5 x 16 / 63A	3 x 1,5 / 16A
<b>NET DIMENSIONS / PACKING DIMENSIONS</b>			
Net / gross width	mm	985 / 1.065	
	inch	38,78 / 41,93	
Net / gross depth	mm	1.210 / 1.310	
	inch	47,64 / 51,57	
Net height / gross height (*without heating)	mm	1.975 / 2.080	
	inch	77,76 / 81,89	
Net / gross weight	Kg	260 / 285	
	lb	573,20 / 628,32	
<b>OTHERS</b>			
Sound level	dB	65	



	A	B	C	D	D1	E	E1	F	G	H	I	J	K	L	M	N	O	P	Q	R
DD-28	1975*	1910	660	1590	1875	102	130	985	1054	970	70	730	802	1760	337	178	1510	215	301	676
DD-35	1975*	1910	660	1590	1875	102	130	985	1210	970	70	730	802	1760	337	178	1510	215	301	676

\* Measurement with legs mounted (30mm)

