

DBW-35 ET2

DBW barrier washers

EASY TOUCH 2

7" touch screen easy to use and fully programmable ET2,
Double display
Connection USB. Free software online for programming, telemetry, data analysis...
Videos on display (instructions...)
37 languages
8 dosing signals as standard

FEATURES

Automatic positioning of drum with motor brake
3 water inlets
WET CLEANING, telemetry as standard
Dual heating (electric - steam) model available
G FACTOR 375

EFFICIENCY

Optimized consumption, automatic or manual adjustment of water levels and detergents according to the load
Ready for water recovery tanks: AQUABAC
High G factor : reduced residual moisture, reduced drying time
Water Saving system: 3 configurable levels of savings

CONNECTIVITY

Danube Online communication - IoT as standard
Remote technical service
Laundry management

ERGONOMICS

Huge loading and unloading doors opening
Easy drum opening by push button
Loading height (800 mm from door base)
Pullman drum option (DBW-27 to 50): make easier the loading and unloading

MAINTENANCE

Electric elements on left side, mechanical ones on right side, connections on the top (protected from detergents and water splashes)
Central drain as standard
Technical menu : statistics, alarms, autotest, data recovery for technicians and maintenance

OTHERS

2 opposed doors
Grey skinplate outer casing.
Stainless steel AISI 304 top panel, vat and drum
Electronic control of imbalance with frequency inverter
Electric, steam or dual heating
CE approved



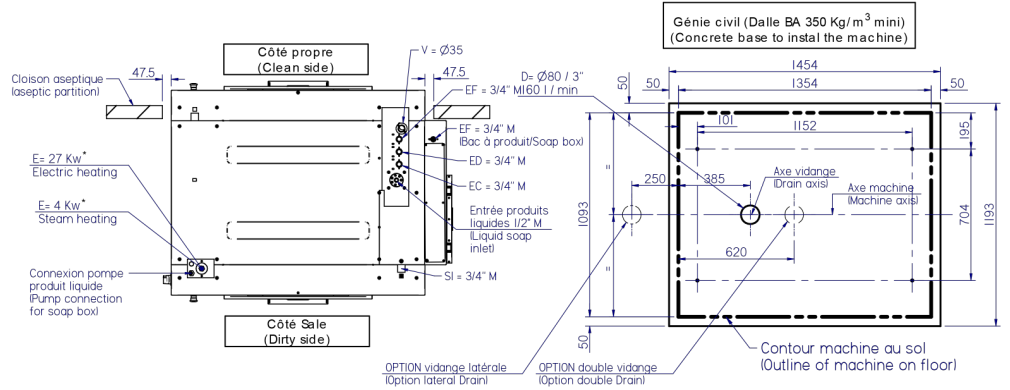
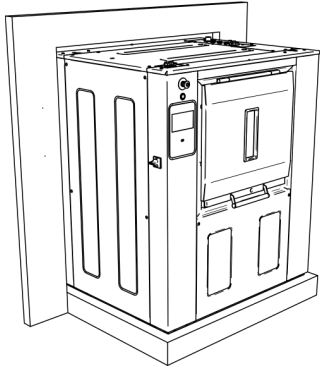
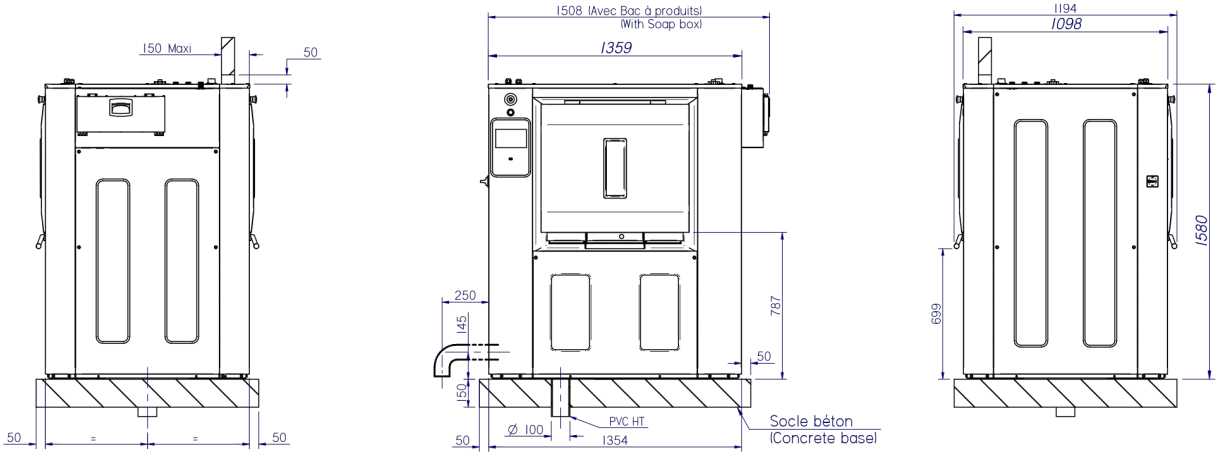
OPTIONS

- IoT licence - Danube Online
- PM Pullman drum DBW-35
- WS Weighing system DBW 27-50 (additional 6 dosing signals included)
- XD 6 extra dosing signals card
- DD 2nd draining valve DBW 27-70
- XL Ready for AQUABAC XL conn. 1" for barriers DBW-35
- TV Titration valve DBW 27-70
- LDV Side drain valve DBW 27-70
- LPS Low steam pressure (0,5 bar) DBW 27-70
- DBX Detergent box DBW 27-70
- UPS To prevent the brake from locking in case of power failure DBW 27-70
- End of cycle light alarm
- 1OD 1-door opening (single side operation) DBW-35
- Base for 850 mm loading height DBW-35
- SSC Stainless steel outer casing DBW-35 (AISI-304)
- 230/III/50-60 DBW-35
- 440/60/3 (marine) DBW
- Stainless steel frame DBW-35
- Stainless steel frame DBW-35 with loading base
- Maritime Wood packaging for DBW-35

DRUM	UNIT.	DBW-35 ET2	
Load capacity 1:9	Kg	38,8	
	lb	85,5	
Load capacity 1:10	Kg	35	
	lb	77,2	
Volume	l	347	
	ft ³	12,25	
Diameter	mm	800	
	inch	31,5	
Depth	mm	690	
	inch	27,2	
Drum compartments	-	1	
GENERAL DETAILS			
Washing speed	rpm	45	
Spining speed	rpm	920	
G Factor	-	375	
Microprocessor ET2	-	7"	
Double screen	-	STD	
Motor break	-	STD	
Double drainage	-	OPT.	
DOOR			
Drum opening dimensions	mm	640 x 515	
	inch	25.2 x 20.3	
Vat opening dimensions	mm	700 x 650	
	inch	27.5 x 25.6	
Height door bottom	mm	800	
	inch	31,5	
POWER			
Motor	kW	4	
Electric heating	kW	27	
Total electric power (elec mod)	kW	31	
Total electric power (hot water mod)	kW	4	
Total electric power (steam mod)	kW	4	
CONNECTIONS		E/DUAL	S
Tension 230V I + N + T 50/60Hz	Nº x mm ² /A	N/A	N/A
Tension 230V III + T 50/60Hz	Nº x mm ² /A	4 x 16 / 80A	4 x 2,5 / 16A
Tension 400V III + N + T 50/60Hz	Nº x mm ² /A	5 x 10 / 50A	5 x 2,5 / 10A
Steam inlet (steam mod)	mm	20 / 27	
	inch	3/4"	
Water inlet	mm	20 / 27	
	inch	3/4"	
Water pressure	bar	3 - 5	
	psi	43 - 72	
Max. Water consumption*	Lit/h	260	
Drain	mm	80	
	inch	3"	
OVERALL DIMENSIONS / PACKING DIMENSIONS			
Net width / Gross width	mm	1.422 (1.574) / 1.608	
	inch	56 (62) / 63,3	
Net depth / Gross depth	mm	1.195 / 1.300	
	inch	47 / 51,2	
Net height / Gross height	mm	1.615 / 1.720	
	inch	63,6 / 67,7	
Net weight / Gross weight	kg	926 / 946	
	lb	2.041 / 2.085,6	
Volume	m ³	3,60	
	ft ³	127,0	



* Program No 2, 100 % load



E = Electricity

(*) refer to "user & installation manuel " §2.2.6 - p10 (pour détails / for details)

EC/ED/EF = Eau Chaude / Douce / Froide
hot water / soft / cold

3/4" M - 3/5 Bars - 100l/min MAX

SI = Entrée vapeur / Steam Inlet

6 Bars / 240 Kg/h - Max 10 Bars

V = Event / Vent

D = Vidange / Drain

Nota : inlet)

- Pour les arrivées d'eau, vapeur et électricité, les machines devront être installées selon les normes en vigueur. (This machine must be installed in compliance with all local regulations)

- Le chassis doit impérativement porter sur toute sa longueur et sur un sol parfaitement plan et de niveau. (The frame must be installed on a perfectly level floor)

- Il est impératif de fixer la machine au sol par les orifices prévus à cet effet. (This machine must be fixed on the floor by threaded rods)

