

STD-18 BASIC EM PLUS BASIC STD Stack dryers



ELECTRONIC CONTROL

Easy-to-use electronic control with push buttons to control temperature and time



FEATURES

Reversing drum action as standard
Galvanized drum
Frequency inverter as standard



VERSATILITY

Make to order - customisation
OPL > Multivending - Standard OPL model easily transformable to coin laundry uses



ERGONOMICS

Drawer as fluff filter, stainless steel mesh
Big door diameters



MAINTENANCE

Hinged control panel: easy and ergonomic access
Technical menu: statistics for technicians and maintenance with external console (option)



OTHERS

White painted panels
COOL DOWN - anti-wrinkle at the end of the cycle
Electric or gas heating (except PLUS model and STD-22 model: only gas)
CE approved



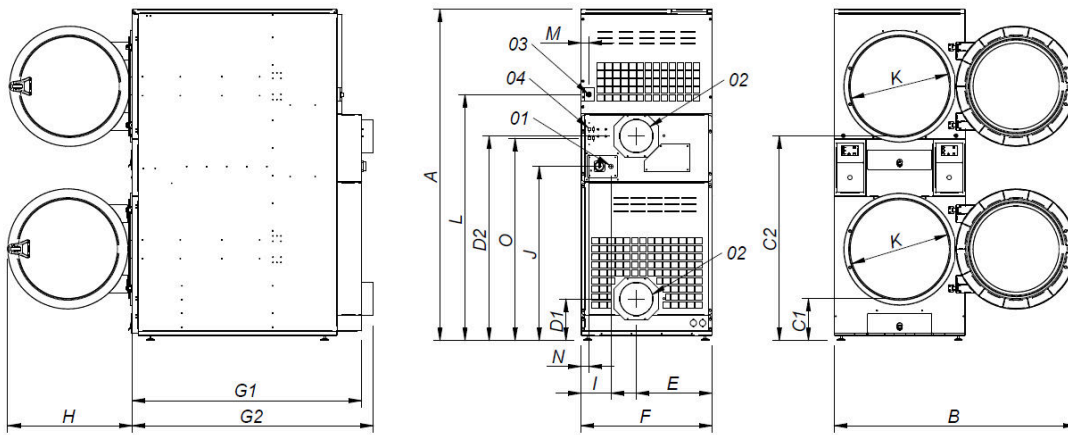
OPTIONS

- BMS New display for EM programmer (2 units for STD)
- F03 Fluff filter with grid 0,3 mm (standard is 0,6 mm STD)
- NG Natural gas heated tumble dryer (LPG as standard)
- WB Wooden packing STD-18
- 400V 3~ 50 Hz STD-11-18
- 400V 3N 60 Hz STD-11-35
- 230V 3~ 60 Hz STD-11-18 G
- 230V 3~ 60 Hz STD-11-18 E

CAPACITY AND DRUM		UNIT.	STD-18 BASIC EM PLUS
Capacity 1/18		Kg	18,3
		lb	40,4
Capacity 1/20		Kg	16,5
		lb	36,3
Ø Drum		mm	750
		inch	29,53
Drum length		mm	746
		inch	29,37
Drum volume		l	330
		cu ft	11,64
Ø Door hole		mm	574
		inch	22,60
Door center height		mm	547 / 1522
		inch	21,54 / 59,92
Height from floor to bottom of door		mm	260 / 1.235
		inch	10,24 / 48,62
ELECTRIC HEATING			
Evaporation capacity		L/h	-
		US gallon/h	-
Hourly output		Kg/h	-
		lb/h	-
Installed heating power		kW	-
Installed electrical power		kW	-
Drum motor power		kW	0,37 x2
GAS HEATING			
Evaporation capacity		L/h	35,3
		US gallon/h	9,325
Hourly output		Kg/h	70,7
		lb/h	155,9
Installed gas heating power		kcal/h	20650 x2
		Btu/h	81891,4 x2
Installed gas heating power		kW	24 x2
Installed electrical power		kW	1,94
Instant propane gas consumption (G31)		Kg/h	2,06 x2
		lb/h	4,54 x2
Instant natural gas consumption (G20)		m ³ /h	2,54 x2
		cfm	1,49 x2
Ø Gas inlet		BSPP ISO 228-1	1/2"
STEAM HEATING			
Installed steam heating power		kW	-
		Btu/h	-
Installed electrical power		kW	-
Steam consumption (8 barG) - Standard		kg/h	-
Steam consumption (116 psiG)		lb/h	-
Steam pressure		barG	-
		psiG	-
Standard steam inlet - outlet		BSPT- ISO7.1	-
Steam inlet - condensate outlet		NPT ANSI B1.20.1 Tapered	-
Steam consumption (5 barG) - Low Pressure		kg/h	-
Steam consumption (72,5 psiG) - Low Pressure		lb/h	-
Steam pressure (low pressure)		barG	-
		psiG	-
Low pressure steam inlet - outlet		BSPT- ISO7.1	-
VENTILATION			
Fan motor power		kW	0,55 x2
Nominal air flow rate		m ³ /h	750 x2
		cfm	441,43 x2



Ø Fume exhaust	mm	200 x2	
	inch	7,78 x2	
HEAT EMISSION			
Maximum total heat emission	kW	2,5	
	Btu/h	8353,4	
Max. front heat emission	kW	1,8	
	Btu/h	6145,5	
CONNECTIONS			
Tension 230V - I + N + T	Nº x mm² / A	E	G
Tension 230V - III + T	Nº x mm² / A	-	3 x 2,5 / 20A
Tension 400V - III + N + T	Nº x mm² / A	-	3 x 2,5 / 20A (1*)
		-	3 x 2,5 / 20A (2*)
NET DIMENSIONS / PACKING DIMENSIONS			
Net / gross width	mm	785 / 865	
	inch	30,91 / 34,06	
Net / gross depth	mm	1.443 / 1.457	
	inch	53,81 / 57,36	
Net height / gross height	mm	1.980 / 2.126	
	inch	77,95 / 83,70	
Net / gross weight	Kg	320 / 349	
	lb	705,48 / 769,41	
OTHERS			
Sound level	dB	64	



- 01 POWER SUPPLY
- 02 2 FUMES OUTLET Ø200
- 03 2 SPRINKLER VALVES 3/4"
- 04 GAS INLET 1/2"
- 05 ETHERNET CONNECTION (only available with ET2 models)

	A	B	C1	C2	D1	D2	E	F	G1	G2	H	I	J	K	L	M	N	O
STD-18 BRONZE PLUS	1980*	1447	259	1234	250	1223	454	785	1374	1443	735	180	1040	575	1472	45	49	1210
STD-18 BASIC PLUS	1980*	1447	259	1234	250	1223	454	785	1374	1443	735	180	1040	575	1472	45	49	1210

* Medida con patas montadas (30mm)

